

Wintringham Community Day



**Supporting health and
wellbeing at Wintringham**

**Sustainable water
management**

**Future phases of
Wintringham**

Contents

Pages 4–5
Phase 1

Pages 6–9
Supporting health and wellbeing

Pages 10–11
District Centre update

Pages 12–13
Sustainable water management

Pages 14–15
An update from our local partners

Page 16
Wintringham Residents’ Association update

Page 17
Events calendar

Pages 18–19
Events and activities

Page 20
How to keep in touch

Page 21
Work experience at Wintringham

Pages 22–23
Spring Watch

Pages 24–25
Supporting sustainable travel

Pages 26–27
Wintringham: Phase 2

Sign up to receive news, information and updates at wintringham.org



Welcome



Welcome to the latest issue of our resident newsletter – the Wintringham Wagtail – with all our latest development and community news, as well as insights from our resident association and partners.

With the warmer weather and lighter evening, it’s been lovely to wander around the leisure trail, see families enjoying the pop-up green and meet new residents at the community events.

Ensuring the community continues to thrive as the development grows is important to us. We’ve been working with the Quality of Life Foundation to analyse the feedback from last year’s survey and see how it can help evolve the design and layout of Wintringham, as well as the amenities and activities coming forward. We’ve provided a summary of the results under the six key themes in the survey and the steps we’re taking to support positive health and wellbeing among residents.

In this edition of The Wagtail, we also provide an overview of water management in Phase 1 of Wintringham and how Sustainable Drainage Systems are used to manage rainfall; an update on the District Centre and an indicative timeline of facilities and amenities coming forward; and plans for Phase 2 of Wintringham, which lies between Wintringham Brook and Hen Brook.

Our natural environment is important as well, not just for our own wellbeing but to ensure a robust and diverse ecosystem where people and nature can live together in harmony. We’re working with a local sound artist to explore the sounds of Wintringham by season and have provided detail of our top ten birds to listen out for as you wander around the development.

Wintringham Residents’ Association is going from strength to strength, with lots of events and activities already taking place this year including the Lunar New Year, Easter and the Wintringham Community Day. We’re also looking forward to seeing how this year’s Sunflower Challenge goes!

As well as supporting the Residents’ Association, the Communities Team has been working with Active New Communities’ partner Living Sport to host a racket sport evening and the recent Sports and Wellness Taster Day. There’s also lots to look forward to with Wintringham on Wheels (14 July), Summer Pop Up Street Food (3 August) and Heritage Archaeology Event (28 September). See page 17 for our full events calendar.

We hope you find this issue of The Wintringham Wagtail interesting and informative. If you have any suggestions for future editions, please let me know.

Christine

christine.littlewood@urbanandcivic.com
T 07384 816725



Phase 1

This map helps show the planned delivery within the first phase of Wintringham: the areas each housebuilder is working in, the public realm and community spaces, and how it all comes together.



Future phases



Future District Centre
Wintringham's first local hub will bring together some key facilities and spaces. It will include a shop, café/restaurant, nursery, library and community centre as well as a public square area for community gatherings. The second phase of the District Centre will also include a health centre and space for new businesses. See pages 10-11 for more information.

First homes to forever homes
There are a wide range of stylish apartments and houses available for anyone looking to make Wintringham their home. More information is available from the show homes and online at www.wintringham.org/homes

Supporting health and wellbeing at Wintringham

Urban&Civic, Wintringham’s master developer, is committed to listening to and working with residents to ensure the best possible development for everyone living here.

As part of a long-term commitment to support positive health and wellbeing among residents, Urban&Civic is working with the Quality of Life Foundation to carry out regular surveys to assess the quality of life of residents who take part. The feedback is then analysed and used to help evolve the design and layout of Wintringham, as well as the amenities and activities coming forward.

Last Summer, the Quality of Life team encouraged residents to complete an online survey about what it is like to live in Wintringham. They did this through flyers, social media and attendance at community events.

The survey focused on different aspects of living in Wintringham and tried to understand the impact of these aspects on residents’ perception, wellbeing and engagement with the local area and their home. The survey covered six key themes: control, health, nature, wonder, movement and community.

The core headlines were shared at February’s Resident Forum and some of the next steps were discussed. These are set out in this article for additional thoughts from the community.



- CONTROL: How much control and influence you feel you have over your local area.**
- **36%** felt they could influence decisions affecting their local area.
 - **78%** of male respondent felt safe walking on their own after dark in a quiet street close to their home compared with **45%** of female respondents.
 - **50%** see themselves living at Wintringham long term.

RESPONSE:
The findings of the survey will be reviewed with the Neighbourhood Watch Team and local Community Safety Partnership to explore opportunities for partnership working to support people to feel safer, and will look at additional lighting in public spaces and on core walking routes. We will also review the Community Engagement Strategy with Wintringham Residents’ Association and update it to reflect the needs of existing and new residents.



- HEALTH: How your home and local area affect your health and wellbeing.**
- **93%** said their home has a positive impact on their health and wellbeing.
 - **70%** felt that the air in their area is clean.
 - Residents expressed appreciation for open green spaces.
 - Views were mixed about the placement of play and fitness equipment.

RESPONSE:
At the follow up Resident Forum, clean air was discussed to see if anyone wanted to explore additional monitoring, but this was not seen as necessary. There has been mixed feedback about the fitness equipment and additional landscaping is being explored to soften these areas, but we also note people like exercising in the green spaces, so we will continue to keep this under review with residents.





NATURE: Your relationship with local wildlife and green spaces.

- **76%** broadly agreed that their ‘local green and natural spaces are a good place for mental health and wellbeing’.
- Residents mainly use their local green spaces for exercise, spending time with friends and family, and connecting with nature.
- **55%** agreed or strongly agreed that their ‘home and neighbourhood provide the opportunity to engage with sustainable living (e.g. provide recycling, composting and green energy options).’ **31%** neither agreed or disagreed and **14%** disagreed or strongly disagreed.

RESPONSE:

The team is exploring what can be done to support residents to live more sustainably, through active travel, water efficiency measures and green energy. While much of the move to support more renewables will be in the second phase of the development, we continue to explore ways to encourage and incentivise sustainable behaviours in the community. If anyone wants to join a working group to look at this, we welcome thoughts and ideas.



WONDER: How you relax and enjoy yourself in your free time in your local area.

- **52%** felt they can ‘easily visit a range of cultural and leisure amenities’, whilst **43%** disagreed and **5%** were neutral.
- **43%** felt their neighbourhood has a unique character they are proud of, **14%** disagreed and **43%** were neutral.

RESPONSE:

In the feedback session, opportunities to bring more culture and leisure to Wintringham, as well as support better connections to St Neots (see Movement below) were discussed. This was kicked off with the Wintringham Community Day in May and there will be a heritage focus in the Autumn.

The team will also be seeking views on whether public realm in the District Centre can bring some character and whimsy to the development, involving local and national artistic contacts.



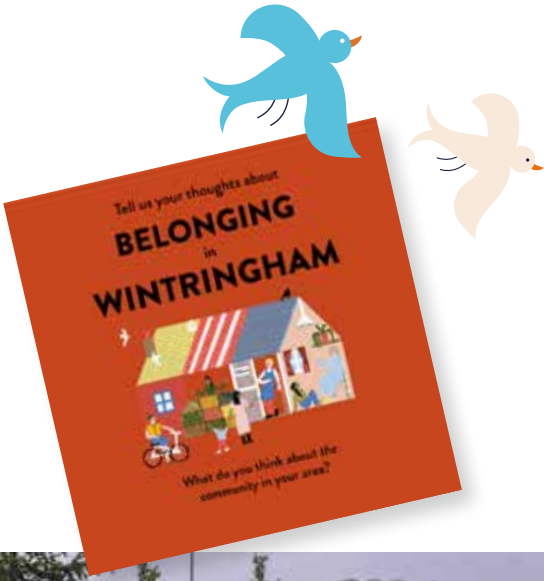
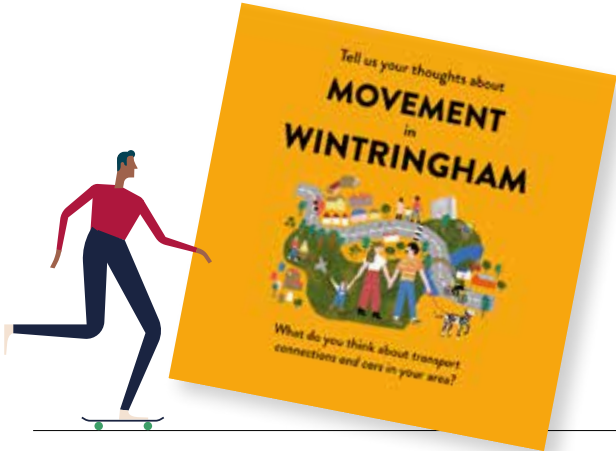
MOVEMENT: How you get around your local area.

- **76%** felt they can walk and cycle safely in their local area.
- **60%** are cycling more today compared to this time last year.
- **60%** don’t think Wintringham is served by frequent, high quality public transport.
- **71%** agreed that cars dominated the local area’s street.

RESPONSE:

The team will be exploring opportunities for improved bus services through the subsidies designed to support better bus services and create sustainable new services. This will be discussed with the Cambridgeshire and Peterborough Combined Authority team, who oversee the bus network and will help shape future travel planning for the next phase of development.

A travel survey will be run in October to help inform future bus service planning and other services like car share and car club. Please keep an eye out for this and fill it in!



COMMUNITY: The sense of community in your area.

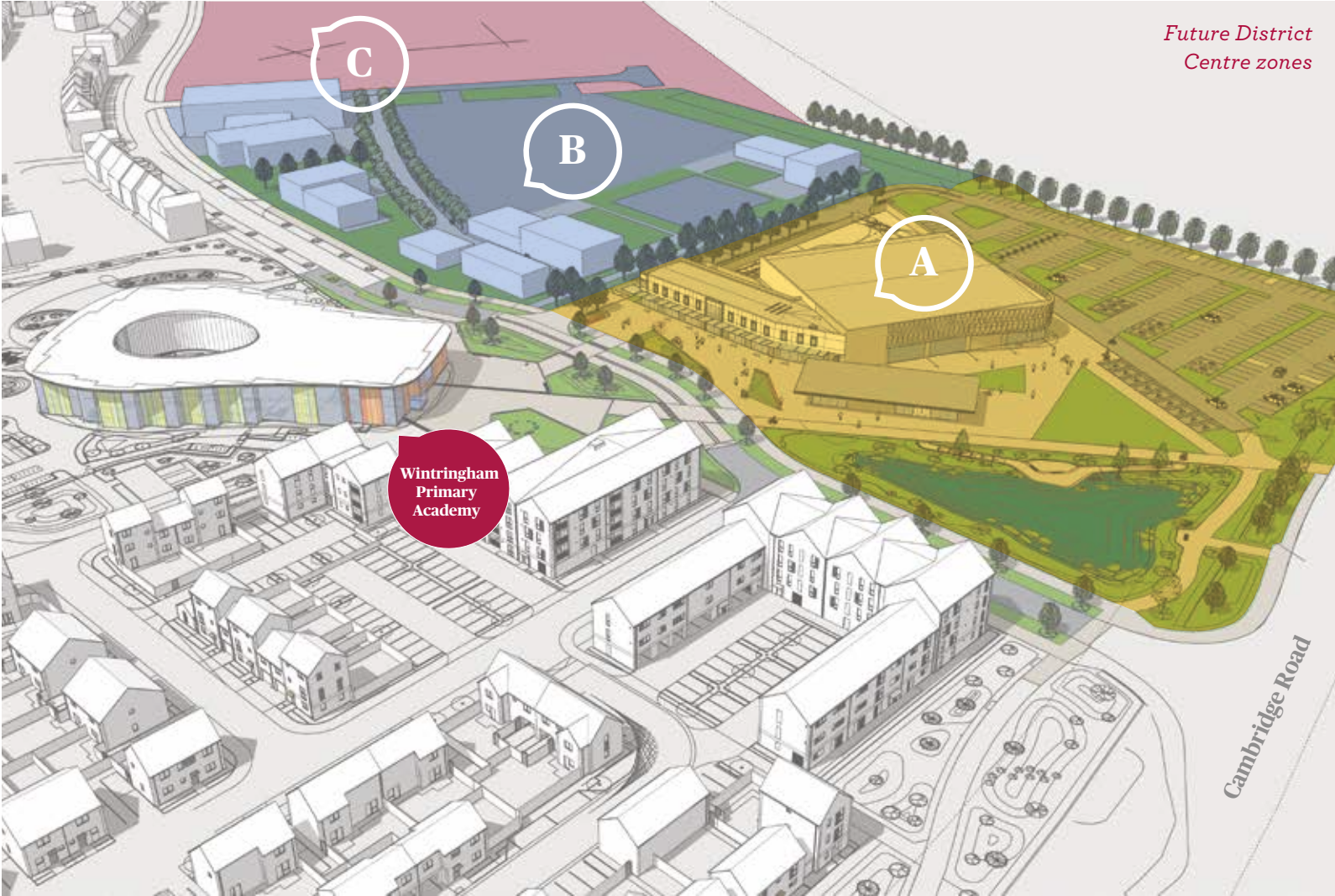
- **88%** agreed their ‘local area is a place where people from different background get on well together.’
- **83%** agreed they can ‘stop and talk with people in my neighbourhood at least once a month.’

RESPONSE:

These are great results for Wintringham and reflect the welcoming nature of the new community. We will continue to support Wintringham Residents’ Association and the community to host inclusive events and activities that will help people meet their neighbours and settle in.

Community facilities will be coming forward as part of the District Centre; in the meantime, Perky Beans mobile barista will be at the school plaza from 8.30am–1.30pm on Mondays and Fridays (subject to demand).

District Centre update



The District Centre will be the main centre for amenities and facilities for the whole of the development. It will include a food store, retail units, business space, café/eatery, nursery, library and community centre as well as flexible outdoor space for a range of activities such as markets and events as well as everyday use.

The District Centre will be delivered in phases over the next 6 years and development will fall broadly into three zones:

INDICATIVE TIMELINE*

- ZONE A:**
- Food store (21,500sqft - a similar size to the St Neots branch of B&Q)
 - 5-6 retail/commercial units to meet local needs (c. 700sqft each)
 - Office space (c. 5,500sqft in total, with market testing taking place to explore if this would be best broken down into smaller units of co-working space)
 - A café/eatery
 - Car park and cycle racks

The Urban&Civic team is investigating opportunities for temporary community space to be provided within these buildings, until the community centre comes forward.

- Autumn 2024: planning submission for buildings and landscape
- Spring 2025: start on site
- Spring 2026: phased opening of facilities

- ZONE B:**
- Nursery
 - Health centre
 - Community centre and library
 - Flexible outdoor space

The planning framework for Wintringham has these key amenities coming forward later in the development, but we are working with Health partners to agree a timeframe to enable this central zone to be delivered earlier. We will keep people updated on those discussions, and run future design sessions on this important civic hub for the community.

- ZONE C:**
- This commercial area provides a range of opportunities for businesses including offices, retail, light industrial and leisure. Urban&Civic is in discussions with a leisure provider and we hope to be able to share an update in the next edition of the newsletter.

Subject to contracts being exchanged, a planning application could be submitted in Summer 2024.

* Timings are indicative and subject to commercial agreements and planning consent.

Sustainable water management

All new developments need a plan to manage surface water – now and in the future – with consideration given to a variety of extreme weather scenarios including a 1 in 100 year storm, flood or rainfall event as well as climate change.

Wintringham lies within the catchment of the River Great Ouse and is intersected by Wintringham Brook and the Hen Brook, flowing east to west from the eastern side of the A428. These features were the foundation of developing a wider water strategy to manage water: not just to support the new community at Wintringham to be climate resilient, but to play our part in holding water back to support the wider drive to make St Neots more resilient to flooding. The technical name for the systems put in place are Sustainable Drainage System (SuDS).

SuDS are used to mimic nature and manage rainfall close to where it falls. Before any development took place, rainwater would infiltrate into the ground before saturating the ground and flowing to its nearest watercourse, be it a small ditch or main river, before finally reaching the sea.

Phase 1 of Wintringham has three waterbodies to the north of Wintringham Brook (A, B and C on the map opposite), the Three Fishes Pond (D) by the primary school and Bret Pond (E) between Cala and Durkan Homes that act as storage systems; filling up during periods of rainfall and gradually emptying following storm events to mimic the natural flow of water prior to development.

These balancing ponds, along with swales (shallow channels that collect water and remove pollution from it), ditches and drains form the main SuDS features at Wintringham.

Monks Brook runs through the development from the A428 near Cambridge Road down to Wintringham Brook. Enhancement works have been undertaken to open it up and provide a landscaped setting.

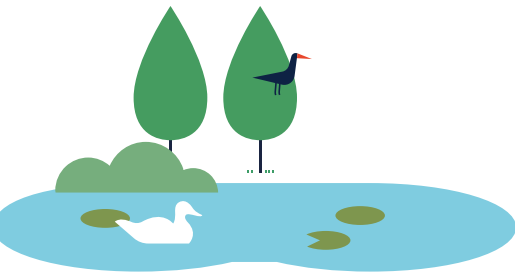
The SuDS also have positive environmental benefits. As the surface water passes through the system, it is cleaned and the quality of the water is improved. They also create habitats for wildlife and enhance biodiversity. Enhancements to the brook corridors will benefit a range of local species such as water voles, otters, birds, bats, grass snakes and aquatic invertebrates.



Wintringham Brook



Bret Pond



Sustainable water management in Phase 1

An update from our local partners

Scott Jenner
Chair of Wintringham Residents' Association



info@ourwintringham.org.uk

Hello! For those who don't know me or are new to Wintringham, I'm Scott, the Chair of the Wintringham Residents' Association (WRA).

I moved to the Morris Homes side of Wintringham just over two years ago with my partner and our dog. Moving away from friends and family back in Hertfordshire, it was really important for me to build great connections with my immediate neighbours, and I've been so privileged to have built amazing friendships with many of them.

I joined the Residents' Association shortly after moving to Wintringham with a clear aim of helping build a connected, safe and inclusive community for all my neighbours. One where you say hello in passing.

I became Chair of WRA in October last year and since then I've been busy working with the rest of the team to create and lead neighbourhood events reflective of our wonderfully diverse community. This year promises to be our biggest yet. Most recently, our Wintringham Community Day brought residents from all backgrounds together to connect, whilst enjoying some games, music and lots of food!

If you are new here, congrats you've moved into a wonderful community – and here's to many happy years in your new home! At Wintringham, if you are moving into a new home, your neighbours will also have moved here recently. So go on, take the leap and introduce yourself!

If you see me around – I'll normally be walking my dog – do say hello! If you'd like to get involved with the WRA or have any questions, please reach out by emailing: info@ourwintringham.org.uk



Councillor Richard Slade
Mayor of St Neots and Councillor for St Neots Priory Park & Little Paxton



richard.slade@stneots-tc.gov.uk

My first month as mayor of St Neots has been really busy, attending 12 meetings and 22 events, having three interviews and volunteering at a disco.

My first official interview was by two young journalists on work experience placement at Black Cat Radio. Megan and Scarlet from Ernulf Academy spent their week at the radio station, and I was honoured to be their first political interview.

I met with Shona and her colleagues from the St Neots Volunteer Centre and learnt about the volunteer car scheme, which supports residents who cannot access public transport. They are in desperate need of more drivers so get in touch if you can help them.

We commemorated the 80th anniversary of the D-Day Normandy landings in St Neots. We raised flags, laid wreaths and lit beacons to honour those who fought for our liberty and freedom in my most emotional and humbling civic duty so far.

During the Great Big Green Week – a national celebration of action on climate change – our council organised a variety of events and initiatives, including an eco-marathon covering 150 miles on foot, bicycle, bus and train.

The mayoress and I also had the pleasure of attended two amazing performances in one evening. After an excellent performance of Seussical the Musical by Pocket Productions, we dashed over to see the last act of Girl on the Train – an emotionally charged thriller adapted excellently by the team at St Neots Players.

Under the theme of culture and sport this mayoral year I am delighted to announce that I have chosen to support Peppercorns Academy, Pocket Productions, Riverside Theatre, St Neots Players and VAMPs of St Neots and will be fundraising to support these amazing groups.

There are lots of fantastic events in St Neots this summer and I urge you to get out, get cultural and get active.

Tracy Bryden
Headteacher of Wintringham Primary Academy



head@wintringham.cambs.sch.uk

Much to my delight, Wintringham Primary Academy is continuing to grow, and in September we will have two, almost full classes in Reception. We currently have 249 pupils in the school, which includes 79 children in our Pre-school.

Summer term is always a busy term in school, with the children going on class educational visits to Sacrewell Farm, Hunstanton, The Science Museum in London and The National Space Centre in Leicester. Year 4 enjoyed their residential trip to Grafham Water and Year 6 are looking forward to their residential trip to the Hilltop Outdoor Centre in Sheringham.

Our Year 6 children have been enjoying their swimming lessons at One Leisure this term and our sports teams have been busy competing in dodgeball and football tournaments and the Priory Cross Country Event. We are very proud of them all. The older children are all also competing in inter-Trust sporting events this term.

Thank you to Stonebond Properties, who kindly installed some raised flowerbeds near our pond area. The children are enjoying planting in them. Thank you also to Henbrook House, who kindly invited our Year 2 children to join the residents for a teddy bears picnic and fun activities. The children had a wonderful time.

You may have noticed that we have replaced some of the tiles at the front of the school with blue tiles. This is because we have had issues with some of the tiles breaking due to being hit by footballs. Please can we ask that the plaza is not used for ball games. We are working with Urban&Civic to try and find a way of preventing ball games in this area.

I would like to take this opportunity to wish all our parents, carers, children and the local community a wonderful Summer.

To find out more, visit: www.wintringhamprimary.co.uk

Wintringham Residents' Association update

The Wintringham Residents' Association (WRA) is formed of residents just like you, who graciously volunteer whatever time they can spare from their busy lives, to help with activities to support the betterment of the community. It works closely with the Urban&Civic team, who help organise and fund many of the events.

EVENTS AND ACTIVITIES

The WRA organises a range of events and activities throughout the year to give residents the opportunity to meet neighbours, make friends and enjoy being part of an active and inclusive community.

The **Lunar New Year** event saw Wintringham's fast-growing, diverse community celebrate with Chinese music, traditional craft activities including calligraphy, 3D jigsaws and origami, dragon dress up and dancing, horoscope readings and lantern painting (see page 18).

To celebrate **Easter**, the WRA hid 30 giant eggs around Wintringham to find over the bank holiday weekend and Peter Rabbit came along to give out prizes, much to the delight of the children.



Residents who have taken up this year's **Sunflower Challenge** have until September to see if they can win the prize for the tallest sunflower or the biggest flower head. Look out for details of the best blooms in the next edition of The Wagtail.



On 11 May, WRA hosted its biggest street party of the year **Wintringham Community Day!** A day designed for neighbours to meet and build connections. There were lots of fun activities for all ages, including a bouncy castle and obstacle course, hook a duck, plus archery to name a few! A DJ provided music and neighbours enjoy a glass of Pimms and an ice cream in deck chair in the sun! Thanks to everyone that came along and made the day so special! See page 19 for more information.



NEIGHBOURHOOD WATCH

The Wintringham Neighbourhood Watch (NHW) is committed to fostering a safe and secure environment for all residents. Its mission is to promote a collaborative and proactive approach to crime prevention, encourage community engagement, and build strong partnerships between residents, local police and other stakeholders.

Join the Wintringham NHW at <https://bit.ly/WintringhamNHW>

Working together to create a safe and secure environment for everyone in Wintringham.

GET INVOLVED

The WRA is looking for new members to help support a strong and dynamic community at Wintringham. To express an interest, please email: info@ourwintringham.org.uk

FIND OUT MORE

Web: www.ourwintringham.org.uk
Facebook: **Wintringham Community**

Events calendar – 2024

February

Lunar New Year Event
Saturday 3rd February

March

Adults Racket Evening
(with Living Sport)
Monday 11th March

April

Easter Crafts Session
Wednesday 3rd April

May

Wintringham Community Day
Saturday 11th May

June

Sport / Wellness Taster Day (with Living Sport)
Saturday 8th June

July

Wintringham on Wheels
Sunday 14th July

August

Summer Pop Up Street Food
Saturday 3rd August

September

Heritage Archaeology Event
Saturday 28th September

October

Wildlife Event
(with Wildlife Trust)
Sunday 20th October

November

Diwali Event
Saturday 2nd November

December

Christmas Community Event
Tuesday 3rd December



Events and activities

LUNAR NEW YEAR

The Lunar New Year event saw the main hall of Wintringham Primary Academy decorated in red – the colour associated with good luck and happiness – with lanterns and elaborate decorations adorning the room to celebrate the Year of the Dragon.

On arrival, attendees were met with a traditional welcome and given an orange and a red envelope (Hongbao), which is customary as a gesture of goodwill and blessings. Volunteers were on hand with a selection of drinks and a tempting menu of Asian cuisine was available on the plaza.

Members of the Wintringham Residents’ Association and the Chinese community, supported by Christine Littlewood, saw the event evolve over nine months: from a chance conversation, to setting up a ‘Team Lunar New Year’ WhatsApp group, a growing and enthusiastic group of volunteers helped create a fantastic event that everyone enjoyed.

Christine said: “It was incredible working so closely with residents to support them in putting this event on; learning about such a rich culture and sharing it with the wider Wintringham community. It was brilliant to see how many volunteers wanted to take part and share their ideas as well as the skills to make this a true celebration of a vibrant cultural history, and the start of a new tradition for Wintringham.

“It is safe to say, this event will be firmly on next year’s calendar, with ambitious plans already being discussed by the growing organising committee!”



RACKET SPORTS

Our recent racket sport evening in collaboration with Living Sport was well received with over 50 residents trying out a variety of sessions including tennis, badminton and pickleball.

As well as a chance to try out a new sport, representatives from local clubs were on hand to highlight the opportunities to play on a regular basis and an expert in racket restringing was on hand to make sure residents’ rackets were in good condition.

Living Sport will continue to work with residents and local groups through the Active New Communities project, funded by Urban&Civic, to connect people to ways in which they can use their move to Wintringham to get into active lifestyle routines.

EASTER EVENTS

During the Easter break, local families enjoyed an Easter crafting event with children demonstrating their artistic talents by designing and colouring in Easter cards, eggs, masks, parachutes, windmills and decorations. The Studio at Wintringham Primary Academy was awash with colour and creativity, and the children proudly took their creations away to decorate their home or gift to friends and relatives.



WINTRINGHAM COMMUNITY DAY

Wintringham Residents’ Association’s Community Day saw the community congregate at the plaza, school hall and surrounding green space to enjoy bouncy castles and an inflatable obstacle course, fairground games including hoopla, a coconut shy and hook a duck, giant Jenga, archery and craft stations.

Refreshments from food trucks, along with drinks, ice cream and candy floss were also available, and a DJ played summer hits as residents relaxed in the sunshine on picnic rugs and in deck chairs. Dr Bike was also there, servicing bikes to make sure families were safe to cycle round the development and further afield.

Christine Littlewood said: “Residents held a ‘meet your neighbour’ event on the pocket park last year and this year’s event has grown exponentially and far exceeded expectations! With more residents moving in and the community flourishing, it was fantastic to see neighbours catching up and new friendships being forged.

“Wintringham Residents’ Association is going from strength to strength and the event wouldn’t have been possible without Scott Jenner, chairman of WRA, and all the other amazing volunteers. They did a fantastic job organising a fun-packed event for the whole family to enjoy, and it was great working with them to help bring their vision to life.”



Keep an eye on our website and social media for more information!



FOOD TRUCKS ON THE PLAZA

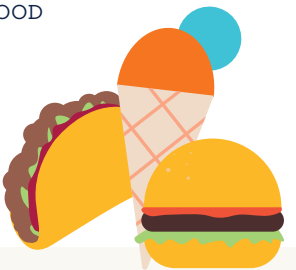
In response to resident feedback, Urban&Civic has been working with food truck provider Off the Beaten Truck to arrange for pop-up offerings for the community with a food truck on the Plaza from 5-8pm on Fridays.

Perky Beans mobile barista will also be serving hot drinks and treats from 8.30am-1.30pm on Mondays and Fridays. Keep an eye on social media for the latest food truck news.

STAY AND PLAY

The Urban&Civic Communities team is working with the local Child and Family Centres and supporting a weekly stay and play session for children up to 5 years old from 10am-11.30am on Wednesdays at Bargroves Centre, 5 Cromwell Road, St Neots (PE19 2EY). To book a space, please call 01480 372700.

SAVE THE DATE!
SUMMER POP UP STREET FOOD
Saturday 3 August



How to keep in touch

There are lots of ways to stay in touch with the latest developments at Wintringham – from the development website to email news updates and social media channels.



 **FOLLOW AND ENGAGE:**
 **@WeAreWintringham**
and Share your Wintringham moments!
#WeAreWintringham

WEBSITE:
www.wintringham.org/news/
Register for email updates:
www.wintringham.org/contact/

If you have any queries about Wintringham, please see if they are covered in our FAQ online (www.wintringham.org/faqs/) or contact the community development team by emailing info@wintringham.org



Work experience at Wintringham

From archaeology to modern technology and future resilience, Ernulf students experience what goes into creating St Neots' newest community.

Year 10 students from St Ernulf school in St Neots recently completed a unique and engaging work experience programme that immersed them in the dynamic world of the built environment and introduced them to the diverse careers involved in creating a new community like Wintringham.

The project team from Urban&Civic engaged the students in the challenges and opportunities to design, plan, deliver and maintain a large-scale development. From designing sustainable homes and planning green spaces for people and nature, to restoring historic waterways and creating new water systems for future resilience against climate change.

As part of the programme, the students were challenged by planners from David Lock Associates to design a sustainable and desirable new place to live using their bespoke interactive 'CHLOE' software. The students also spent time with the Barratt and David Wilson Homes' site team, exploring the Discovery House and trying their hand at bricklaying.

A standout moment for the students was the challenge of building a bridge strong enough to roll a tennis ball over using dried spaghetti and marshmallows. This activity not only fostered teamwork but demonstrated the value of maths and physics learnt at school for future careers in design, engineering and project management.

Christine Littlewood said: "The work experience programme has been an eye-opener, providing the student with an insight into how the subjects they are studying at GCSE can be applied to real life scenarios and providing a better understanding of the various jobs and careers that go into making a place like Wintringham come to life.

"Engaging the next generation and introducing them to the complexities of what we do was incredibly rewarding and we were impressed by their enthusiasm and ingenuity. We look forward to continued projects with Ernulf to support their students."

Spring Watch

Nature is blooming all around Wintringham and there’s lots to look out for in the summer – from trees in blossom and butterflies among the wildflowers to birds nesting and ducklings on the ponds.

It is not only what you can see, but also what you can hear that makes this time of year so special. With birds bursting out in song across Wintringham, we thought we’d share some of the highlights you can be listening out for.

Top ten birds to listen out for:

1 ROBIN (*Erithacus rubecula*): Known for its melodious song, the Robin is a common garden bird found throughout the UK. These territorial birds essentially use this song to warn other Robins to stay away. They can be heard singing throughout the day, as part of the dawn chorus as well as at dusk – all year round (except when moulting).

2 BLACKBIRD (*Turdus merula*): The blackbird’s flute-like song is a staple of the British countryside. Rich and mellow, with a languid pace and short pauses between phrases, the blackbird can typically be heard on long summer evenings. Blackbirds sing most typically during breeding season – from March to July.

3 WREN (*Troglodytes troglodytes*): One of the smallest yet loudest of the UK’s birds, the Wren makes its home in almost every habitat in Britain. The Wren produces a loud and intricate song with a tell-tale machine gun rattle towards the end. It can be heard all year round but most strongly from early spring.

4 CHAFFINCH (*Fringilla coelebs*): This colourful finch has a distinctive, rhythmic song that can be heard throughout the spring and summer. In their prime, the birds repeat a two or three note-rattling verse up to six times a minute and 3,000 times a day. Chaffinches are also believed to have regional variations – with its song altering across counties and countries. In addition to its song, it is thought to have around ten different calls.

5 BLUE TIT (*Cyanistes caeruleus*): Its cheerful song and acrobatic behaviour make it a favourite in gardens and woodlands. It also has a variety of contact and alarm calls – from inquisitive sounds to softer peeps. It can be heard throughout the year but mostly from late winter through to the end of the breeding season.

6 GREAT TIT (*Parus major*): Similar to the Blue Tit, the Great Tit has a more varied and powerful song as well as a range of calls. It begins singing in early spring as buds begin to open.

7 SKYLARK (*Alauda arvensis*): Found in open countryside, the Skylark’s song is a quintessential sound of summer. From late February to early summer, its warbling song is delivered from the sky as the male ascends. Like most songbirds, Skylarks sing to defend their territory and attract a mate.

8 SONG THRUSH (*Turdus philomelos*): Recognisable by a variety of short, high-pitched phrases, usually repeated two or three times in quick succession, the song thrush has a beautiful, flute-like song. Males begin singing as early as January, particularly first thing in the morning.

9 COMMON WHITETHROAT (*Sylvia communis*): Found in hedgerows, grassland and scrub, this warbler has a distinctive scratchy and jolting song in short chattery phrases with short pauses between them. Whitethroats can be heard in the UK from April, with males arriving about 10 days earlier than females to set up territories before their potential mate arrives.

10 COMMON REED BUNTING (*Emberiza schoeniclus*): Inhabiting wetland, farmland and other open areas with bushes and hedges, the Reed Bunting’s song is a series of short, sharp notes. In the spring and summer, the male sings from a prominent perch, showing off his distinctive black and white head pattern.

There are several Apps that can help you identify birds by their sound, including *Merlin Bird ID*, *Warblr* and *Chirpomatic*.

The Communities Team is working with local sound artist Richard Youell to explore the sounds of Wintringham by season. Find out more in the next edition.



Supporting sustainable travel

By travelling more sustainably, both for social journeys and commuting, you can not only reduce your carbon footprint and improve your health, but also support better local air quality and reduced traffic levels, providing benefits for the whole community.

Urban&Civic supports Wintringham residents with LocalGO, a community travel package designed to promote sustainable transport and foster a culture of ‘car last, not car first’.

The LocalGo initiative – which now has over 100 members at Wintringham – promotes the low carbon travel options available locally and helps residents access discounts and offers to help them leave the car at home by walking, cycling and using public transport connections.

Membership to LocalGO is free for Wintringham residents and provides personal travel planning support as well as a £50 cycle voucher that can be used on anything cycle-related including new bikes, servicing, clothing and accessories, a £50 voucher for use on the Ting bus service (a flexible demand responsive transport service serving St Neots) plus other savings on Railcards and with Halfords.

To join, visit: www.localgo.co.uk/join and enter the scheme password wintringham@localgo.co.uk on the sign-up form. You can then log in and start saving!

If you have any queries, please email: wintringham@localgo.co.uk

Feedback from the Quality of Life survey showed that **60% of respondents are cycling more than they did last year.**

60%

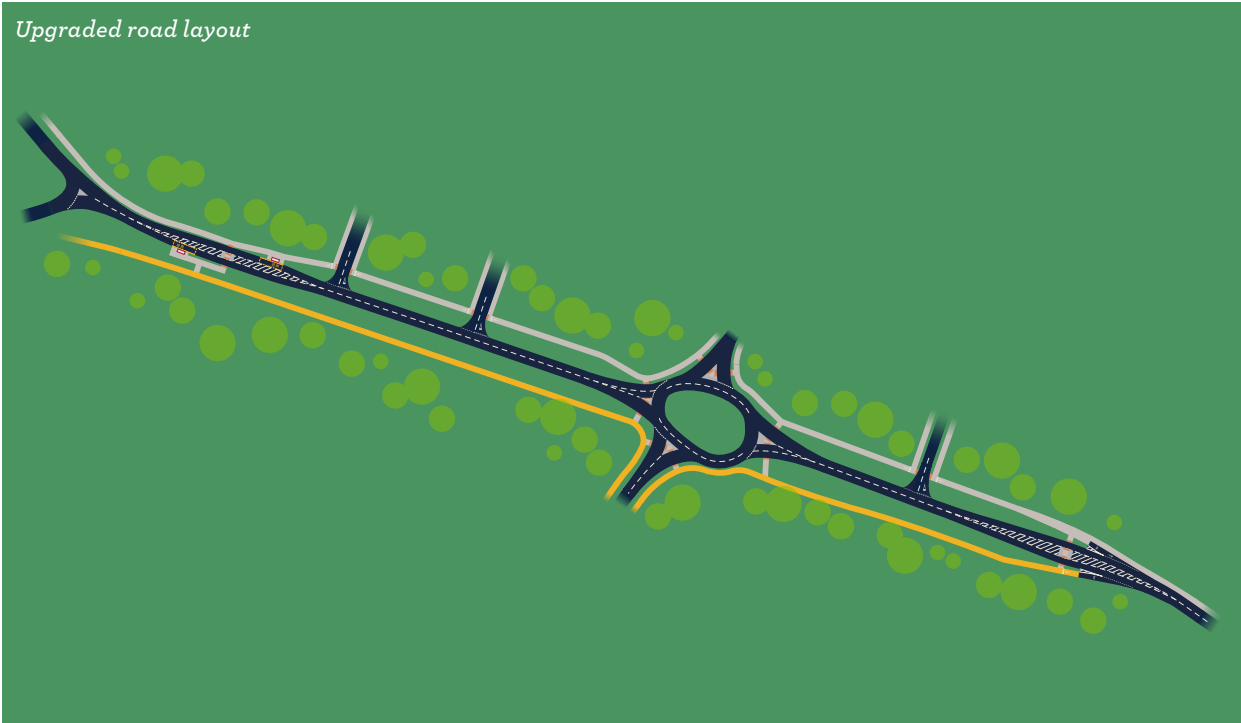


SAVE THE DATE!

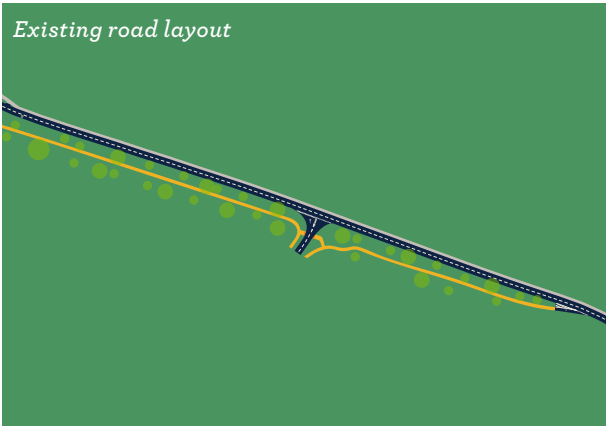
Wintringham on Wheels will take place on Sunday, 14 July and will include pedal-related activities, featuring a bubble machine, smoothie bike, ebike test rides, Dr Bike session and a range of different types of bikes to try. Keep an eye out for updates on social media.



Upgraded road layout



Existing road layout



CAMBRIDGE ROAD UPDATE

Upgrades to Cambridge Road (B1428) between the A428 junction and Bret Road roundabout at Wintringham to support the eastern expansion of St Neots are going well, with work due to be completed late summer.

The upgrades include a roundabout at the Pelham Road junction (to replace the existing T-junction), three new junctions to serve the future Monksfields development (the next phase of Love’s Farm), new cycle paths, bus stops/shelters and pedestrian crossing points.

The new design will make the route safer for all users and enable a 30mph speed limit to be implemented once complete. A range of utilities and services will also be installed underground, along this route, as part of this work.

Paul Murfin, Communications and Partnerships Manager for Wintringham, said: “We are pleased to say we are nearing the end of these works and are really grateful for everyone’s patience. The improvements will not only provide additional cycling, bus and pedestrian support, but also enable the speed limit to be lowered along this road.”

For updates, please visit the Wintringham and Love’s Farm Facebook community pages.



Wintringham: Phase 2

Following last year’s community consultation on Phase 2 of Wintringham, which covers the area between Wintringham Brook and Hen Brook, the team has finalised and submitted a framework application. This will ensure the high design standards established at Wintringham continue into the next phase of the development.

Phase 2 will include around 900 homes, a 2FE primary school, local facilities, open space, sport and recreation facilities and a network of new footpaths, cycleways and bridleways that connect to the rest of Wintringham and into St Neots.

HOMES

As well as setting the standards for design and quality in the Design Code, Urban&Civic’s new Sustainability Framework will help ensure a low carbon development with housebuilders delivering energy and water efficient new homes, with lower carbon materials.

PRIMARY SCHOOL

The development’s second primary school will be a focal point of Phase 2, with green and safe connections taking residents through open space and parkland, leading to the main entrance. The school building and grounds will also have the potential to support community activities outside school hours.

SPORTS AND RECREATION

Sports and recreational facilities in Phase 2 will include both formal outdoor sports facilities with a range of pitches and courts, as well as informal open space for active recreation such as walking, running and cycling. Equipped play areas and play on the way will also encourage the youngest residents to explore and make friends in a safe and stimulating environment.

If you would like more information on the plans, please email: info@wintringham.org

DELIVERABLES:



C. 900
New Homes



54 ACRES
Public Open Space
& Sports Pitches



NETWORK
of Footpaths,
Cycleways &
Bridleways



NEW
Primary School



LOCAL
FACILITIES
& Public Square

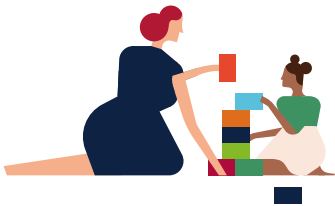
LANDSCAPE AND ECOLOGY

Green corridors that connect green spaces designed to support the health and wellbeing of the community will create an ecologically rich, biodiverse nature recovery network. This will include enhancements to the Brook corridors and Railway Field, with swathes of species-rich grassland, wetlands, woodland and permanent water bodies creating a mosaic of habitats to support local wildlife.

FOOTPATHS AND CYCLEWAYS

Safe routes will connect people to key facilities as well as new and enhanced assets including parks and sports pitches. This network of pedestrian and cycle routes will also provide links throughout the development and connect with St Neots and the surrounding area, making sustainable active modes of transport the natural choice for travel.

To enable the delivery of the proposed masterplan, Urban&Civic is proposing to replace the four existing public rights of way through the site (numbers 52, 53, 54 and 55) with a new footpath and bridleway that will circle Phase 2 and connect with the existing network of public rights of way surrounding the development. This will provide a safe, convenient and inviting route for local communities as well as a green corridor for wildlife and ecology.



KEY PHASE TWO VISION:

Creating a Safe,
Sustainable
Neighbourhood



PROTECT &
ENHANCE
EXISTING ASSETS



COMMUNITY
EMPOWERMENT



BIODIVERSITY
NET GAIN



CARBON
FOOTPRINT
CONSCIOUS



PROTECTING
PEOPLE’S
WELLBEING



ACCESS TO
OPEN SPACE

Key Contacts

General maintenance

Including: grass cutting; clearing drains; gritting roads in Winter; repairing street lighting; trimming hedges; and ensuring play area safety.

Managed by Encore Estate Management
01223 866980
info@encoreestates.co.uk

Housebuilders

Please contact your house builder with any queries about the new homes you have moved into, including outside lighting, electricity, water and network connections.

Housing associations

If you have any queries about your home, please contact your housing association representative.

Hopefully you have had a chance to look through the *Welcome Pack* you received, and this should have a wealth of information about local facilities and amenities. Below is a handy summary of the key contacts you might find useful:

Wintringham community development and events

Including: community events; activities, facilities and new resident information.

Christine Littlewood,
Community Development Lead
Christine.littlewood@urbanandcivic.com
07384 816725

Employment and training

Support with recruitment, employment and training opportunities in the local area.

Local government

Information about your local elected representatives can be found at:

www.cambridgeshire.gov.uk
(St Neots and Gransden division)

www.huntingdonshire.gov.uk
(St Neots East ward)

www.stneots-tc.gov.uk
(St Neots East ward)

Health

Lakeside St Neots provides GP services for 24,000 patients in and around St Neots. Please contact Reception to register as a new patient. If you have moved locally and are already registered at the practice, please remember to update your new address. If you are looking to register we urge all residents to do so in good time, as it can take some time to update and transfer medical records, and it is better to have this sorted out before you need to see a doctor.

T 01480 406677
lakeside.stneots@nhs.net

Please also refer to your *Resident Welcome Pack* for further information and contact details on local hospitals, dentists and healthcare providers, and a range of other facilities and services.

Supporting St Neots community events



Urban&Civic is sponsoring a range of community events in St Neots this year, including St Neots Festival (6 July) and Dragon Boat Race (17 August), when Wintringham Wagtails will be going for gold!



WINTRINGHAM
ST NEOTS