



Leisure trail opens

**Wintringham
Heritage Day**

**Feedback on
Phase 2 consultation**

**Active New
Communities**

Welcome

Welcome to the latest issue of our resident newsletter – the Wintringham Wagtail – with all our latest development and community news, as well as insights from our resident association and partners.



We've had a busy few months at Wintringham, with the leisure trail opening up to provide a walking and cycling route around the perimeter of the first phase, with play on the way and fitness stations as well as a variety of community events and activities – from wildlife and heritage events to sporting activities.

We're also excited to announce that we are launching the Active New Communities project with Living Sport, who will be supporting and empowering our community to lead active and healthy lives. The team will be creating a bespoke approach for Wintringham and need your help by filling in an online survey (see page 18 for more details).

We have also been looking at ways to ensure the community continues to thrive as the development grows, with the Quality of Life Foundation helping us understand how our residents perceive and engage with their local area and home to ensure their ongoing wellbeing. These results will be shared with the community in early 2024.

In this issue, we also feedback on the results of the Phase 2 consultation we carried out with the local community earlier this year. Comments received are helping the project team refine plans, and we'll be back with more information on Phase 2 next year.

As always, we hold a joint community forum every other month with the Wintringham Residents' Association – the next one will be on Thursday 25th January and we will share joining details for this in the New Year. Please do join us to hear the latest community and development news, listen to one of our guest speakers and have your say.

We hope you find this issue of the Wintringham Wagtail interesting and informative. Please don't hesitate to get in touch with me, either to find out how I can support you living at Wintringham or if you would like to share any suggestions or feedback.

With season's greetings and best wishes for a happy and healthy new year.

Christine

christine.littlewood@urbanandcivic.com
T 07384 816725



St Neots Council Representatives

Meet your local councillors

There are three tiers of local government responsible for different services at Wintringham.

Cambridgeshire County Council

For education, transport, fire and public safety, social care, libraries, waste management and trading standards.

Wintringham is in the St Neots East and Gransden division, which is represented by:

- **Councillor Stephen Ferguson** (Independent)
E: stephen.ferguson@cambridgeshire.gov.uk

www.cambridgeshire.gov.uk

Huntingdonshire District Council

For waste collection, recycling, Council Tax collections, housing and planning applications.

Wintringham is in St Neots East ward, which is represented by:

- **Councillor Lara Davenport-Ray** (Green)
E: lara.davenport-ray@huntingdonshire.gov.uk
- **Councillor Dr Marcus Pickering** (Independent)
E: marcus.pickering@huntingdonshire.gov.uk

www.huntingdonshire.gov.uk

St Neots Town Council

For allotments, grass cutting, floral displays, cemeteries bus shelters, community centres and play areas.

Wintringham is represented by St Neots East Ward councillors:

- **Councillor Ben Pitt**
E: ben.pitt@stneots-tc.gov.uk
- **Councillor Anna Crompton**
E: anna.crompton@stneots-tc.gov.uk
- **Councillor Jaideep Kumar** (Wintringham resident)
E: jaideep.kumar@stneots-tc.gov.uk
- **Councillor Kate Louise Dundas-Todorov**
E: katie.dundas-todorov@stneots-tc.gov.uk

The Town Council tends to meet monthly on a Tuesday evening at The Priory Centre, Priory Lane, St Neots PE19 2BH.

www.stneots-tc.gov.uk



Contents

Pages 4 – 5

Phase 1 update

Pages 6 – 7

New leisure trail opens

Pages 8 – 9

Cambridge Road upgrade works

Pages 10 – 11

An update from our local partners

Pages 12 – 15

Community events

Pages 16 – 17

Supporting health and wellbeing
Travel and transport

Pages 18 – 19

Supporting active communities

Pages 20 – 25

Future development

Pages 26 – 27

Work experience/youth consultation

Sign up to receive new information and updates at wintringham.org



Phase 1

Love's Farm



Barratt Homes: a selection of 1 and 2 bedroom contemporary apartments and modern family homes up to 4 bedrooms from the nation's leading developer.

Cala: a mix of 3, 4 and 5 bedroom family homes with private gardens, and 1 and 2 bed apartments with communal amenity spaces and secure, covered bike parking.

David Wilson Homes: a premium selection of 2-5 bedroom homes from a housebuilder with over 60 years of experience in building quality new homes, with high specification and modern design.

Durkan Homes: a collection of 1 and 2 bedroom apartments and 2, 3 and 4 bedroom family homes within easy walking distance of the primary school and future District Centre.

Morris: an exclusive collection of 3 and 4 bedroom detached and semi-detached homes that blend timeless character with high specification and modern design.

Stonebond: a collection of modern 2 – 5 bedroom homes, providing an extension to the beautiful new community already taking shape.

Future District Centre

Wintringham's first local hub will bring together some key facilities and spaces. It will include a shop, café/restaurant, nursery, gym, library and community centre as well as a public square area for community gatherings. The second phase of the District Centre will also include a health centre, and space for new businesses. A planning application is due to be submitted in early 2024.

www.wintringham.org/homes

Future phases

New leisure trail opens

The leisure trail will provide a 4km walking and cycling loop around Wintringham. It broadly follows the perimeter of the development, and in time, a second longer route will cover the later phases. This current route takes in growing woodland and natural habitats being created in the middle of the development as well as historic brooks and Rights of Way. In Summer 2024, the route will be reconfigured slightly to provide views of the stunning lakes to the south of Phase 1.

Routes like these are key to Wintringham's health and wellbeing focus and as people walk and cycle more as part of their everyday lives, we hope it will encourage people to travel about more sustainably, benefitting their health and carbon footprint.

- Outdoor exercise equipment is clustered in green open spaces along the route, for those wanting to shake up their activity levels or try something new.
- A (temporary) toddler play park provides equipment and play space for little ones.
- Wintringham Brook has undergone an extensive refurbishment and has been opened up to support more vegetation and habitats for nature.
- Three large lakes provide important sustainable drainage for the development, as well as crucial climate resilience for the wider area. As they mature, they will fast become a haven for nature.
- A large bird/wildlife hide will enable people to immerse themselves in nature without disturbing it and watch as the local wildlife starts to flourish and thrive.
- Wayfinding boards continue throughout the trail to encourage exploration and discovery of some of our hero species and habitats, which are part of Wintringham's biodiversity strategy.
- The new Jubilee Woodland – planted in the year of the Queen's Platinum Jubilee and commemorating a lifetime of service – includes 500 new trees. Once complete, this woodland will have over 5,750 trees including Oak, Beech, Silver Birch, Pines, Wild Cherry, Bird Cherry, Whitebeam and Small Leaved Lime.
- The route connects to the Cambridge Road linear park, which provides a safe and green walk to school route, including orchard trees to pick an apple a day on your way to school.



Cambridge Road upgrade works

As residents will be aware, work is being carried out to upgrade Cambridge Road (B1428) between the A428 junction and the Bret Road roundabout at Wintringham. This will support the eastern expansion of St Neots and provide a new gateway to the town, as well as better connections for Wintringham and Monksfields, the next phase of Love’s Farm.

The upgrades will include a roundabout at the Pelham Road junction (to replace the existing T-junction), three new junctions to serve the future Monksfields development, new cycle paths, bus stops/shelters and pedestrian crossing points.

The new design will make the route safer for all users and enable a 30mph speed limit to be implemented once complete. A range of utilities and services will also be installed underground, along this route, as part of this work.

Work started in November and will be carried out in phases over 36 weeks, with a six week break over the Christmas period.

Work will resume in the New Year and although no closures of Cambridge Road and subsequent diversions are required for the early phases, there will be requirements towards the end of the works when the new parts of carriageways are connected to the existing road.

Some footpaths also need to be closed for health and safety requirements, with the footpath that runs parallel to Cambridge Road temporarily closed until Spring 2024 to enable works to take place.

The work forms part of commitments from both Wintringham master developer Urban&Civic and Monksfields developer L&Q to carry out upgrades to Cambridge Road.

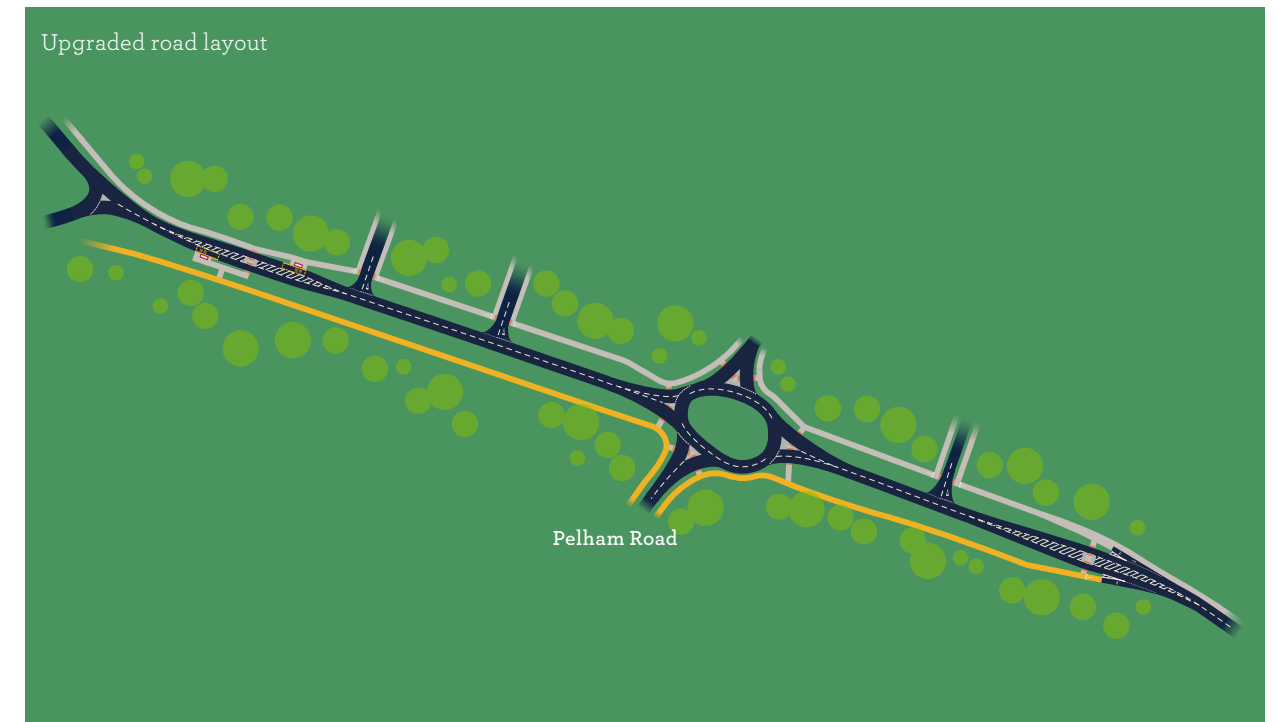
Paul Murfin, Communities and Partnerships for Urban&Civic, said: “We have worked hard with L&Q, utilities and service providers, and the Highway Authority to design the scheme and develop this programme to ensure the upgrade works to Cambridge Road are delivered in one coherent programme.

“We apologise for any inconvenience and will continue to work with the contractor to minimise the impacts as well as ensuring future road closures and diversions are well signposted and notified in advance.

“When complete, the works will provide a number of the benefits that we have been discussing with Wintringham and Love’s Farm residents, including better cycle and walking provision on the north of the road, safer crossings and a reduction in speed limits. We are pleased we have been able to bring forward the timing of these works and, working together with L&Q, to be able to carry them out as one coherent package, so there is only one period of disruption for our residents and neighbours.”

These improvements, which mark the second phase of works to upgrade Cambridge Road as the main Eastern Gateway to St Neots, are being carried out by NATTA Building Company and are due to be completed in Summer 2024.

For regular updates on these works, please visit www.wintringham.org and the Wintringham and Love’s Farm Facebook community pages.



An update from our local partners

Helene Tame Community Chaplain Love's Farm and Wintringham



community.chaplain@yahoo.co.uk

Let me tell you a story. It's a story about a bowl. It's a beautiful, simple, carved wooden bowl with a rounded bottom and a short leather cord attached close to its rim, by which it can hang. I've owned it for almost 30 years... and this is how it came to me.

Before we married, my husband Jonathan worked with an international agency involved in relief and development projects around the world. He went to visit one of the projects based amongst a nomadic Tuareg tribe in Niger. He spent 24 hours with the tribe, visiting and reviewing the project progress. At the end of the day, they sat together around a small fire to eat a shared meal and, as they ate, a bowl of camel milk was passed from one to the other. When Jonathan's turn came, he admired the simple wooden vessel before taking his drink and passing on the bowl.

In the morning when it was time for him to leave, the chief came up to him holding out the (empty!) bowl and said: "Pour votre femme." (For your wife). This presented a momentary dilemma for Jonathan because at the time he had no wife nor any immediate prospect of having one, but he knew the chief wouldn't understand that given his age, that declining the gift would appear rude and that despite his lack of a wife he really wanted the bowl! So, he took it, thanked the chief and resolved in his heart that as soon as he had a wife, he would be sure to make this the first thing he gave her.

A few years later in front of all our wedding guests, Jonathan made his speech and presented me with a wrapped gift. What I opened was the bowl!

I love telling this story. I love remembering its distant origins, our wedding day and the stories we've accumulated since; because we all carry stories, don't we! Some stories, like mine and the bowl, are ones we love to remember and tell, but there are others that are much harder to share: stories of loss or of things not working out, stories that provoke deep feelings of disappointment, frustration or regret. When we move home, especially to a new location where the people around us don't know our stories, we can unpack our physical boxes whilst leaving other ones tightly closed, because it takes courage to let others know who we are and the stories we carry. And yet we all have those stories and, when we share our stories, we give courage and permission to others to share theirs.

I don't know what brought you to your new home at Wintringham, but let me encourage you (literally to put courage in you) to share your stories with the people you meet and live besides, as well as embrace the opportunity to take a share in writing the story of your new community. No one's story is ever over, whatever the previous chapters. New characters and contexts provide wonderful opportunities for new stories to be written and heard. I hope you'll do both - and if you ever have a story that you want someone else to hear but haven't found your neighbours yet, please know that I love to both tell and listen to stories.



Councillor Rob Simonis Mayor of St Neots and Councillor for Eaton Ford Ward



robert.simonis@stneots-tc.gov.uk

Hello, and for those who are new to the area, a warm welcome. To briefly introduce myself I'm Rob, the Mayor of St Neots. I have lived in the town for nearly 10 years with my wife and two kids. We moved here originally to be close to family but quickly realised how special a place it is and how the people who live here are integral to that.

Across the town there has been a lot going on this year. The Festival (run by the Neotists) was a huge success and there was more entertainment at the fortnightly Farm and Craft markets. We have had bands in the park through the Summer, food festivals, the beer festival and dragon boat racing. Later in the year there were pantomimes at the Priory Centre and of course the Christmas lights switch on - to name just a few highlights.

This year has also seen bigger changes starting with the redevelopment of the Market Square and High Street, and next year the regeneration of the Priory Centre. Both projects are part of multi-million pound investments by the District Council so that St Neots continues to be a great place to live, visit and do business.

If there is anything about the town you'd like to talk about, please email me using the address above. My other contact details (along with your local councillors) are on the Town Council website:

www.stneots-tc.gov.uk/councillors



Tracy Bryden Headteacher of Wintringham Primary Academy



head@wintringham.cambs.sch.uk

Autumn Term at Wintringham Primary Academy is always a very busy time. We have been rehearsing for performances by both the Pre-school children and the children in Reception, Year 1 and Year 2. The children have been learning songs, dances and lines and I am proud of how hard they have been trying.

We also recently held our first full Christmas Fayre, which was really well attended and everyone seemed to enjoy it. Father Christmas was very popular!

The whole school celebrated Diwali last month. One of our parents, delivered a short assembly sharing the significance of Diwali and explained why Hindus celebrate the occasion. The children then worked their way around the different activities such as drawing rangoli patterns with chalks, creating Diwali lamps, making traditional sweets and producing lanterns.

The school is continuing to grow rapidly with over 140 children on roll in the school and 60 children within the Pre-school. In January, we will be splitting the KS1 class into two separate classes to accommodate each year group. This will mean the school will have a separate class for each year group and space in all year groups for new children moving onto the development.

We will also be opening an ERB class in January, which will accommodate up to 10 children with social, emotional, mental and health needs.

I would like to take this opportunity to wish all our parents, carers, children and the local community a wonderful Christmas break and a happy New Year.

To find out more, visit:
www.wintringhamprimary.co.uk



Wintringham Residents' Association update

The Wintringham Residents' Association (WRA) is formed of residents just like you, who graciously volunteer whatever time they can spare from their busy lives, to help with activities to support the betterment of the community.

This year, the WRA has organised a number of events for the local community to enjoy:

MARCH – Sunflower competition

Residents were given a competition kit and a prize was awarded for the biggest flower and tallest plant.

Winners were announced in September:
Biggest flower – Dashini and family
Tallest plant – Vicki and family

APRIL – Easter egg hunt

Families spent the Easter weekend hunting for 20 decorated eggs on the leisure trail around Wintringham. Families that found all 20 eggs received an Easter egg with compliments of WRA and Urban&Civic.

MAY – King's Coronation street party!

Residents gathered on Morris green to celebrate the coronation of King Charles III. Highlights included a free game of bingo with prizes for a line and full house, shared food and drinks, and dancing to the best of British music.

NOVEMBER – Community celebrates Diwali

The WRA teamed up with Urban&Civic again for this year's Diwali, which saw over 250 people come along to celebrate the Festival of Lights with crafts dancing and a performance by 'Monkey Shanti' band where residents were able to dance and celebrate the music together!

A Diwali celebration is not complete without sweet treats and the community enjoyed traditional bakes made by a local Indian bakery including Jalebi, Besan ladoo, Galub and Jamun cupcakes and The Chai Stall food truck provided delicious Indian street food!



Events and activities

Wild Wintringham

Wintringham is creating homes for nature as well as people, with an abundance of natural habitats supporting a wide range of wildlife.

Earlier this year, we teamed up with experts from The Wildlife Trust for Beds, Cambs and Northants to host a guided pond dipping event. Over 25 families joined us to see what creatures they could find living beneath the surface and in the aquatic vegetation and made plant dumplings, ready to create a bucket pond at home.

Staff and volunteers from The Wildlife Trust were joined by seven super keen Paxton Pits Youth Rangers, young people who are part of a number of groups that The Wildlife Trust run across the three counties, that are passionate about nature conservation. The event at Wintringham provided an opportunity for them to combine two things they enjoy – sharing their knowledge about local wildlife and pond dipping.

Christine Littlewood, Communities Development Lead for Wintringham, said: "It was great to see local families engage with the natural world around them. All our landscaping design incorporates features to create and support vital habitats for nature. Working with the experts like Wildlife Trust helps to bring these to life for people, so they can learn about the nature around them, and how they can play their part in creating spaces for nature in their own back gardens."

The wildlife booklet in your Welcome Pack was developed with the Wildlife Trust and has lots of ideas on how to turn your garden into a haven for wildlife. More information is also available on the Wildlife Trust's website: www.wildlifebcn.org





Wintringham Wagtails take second place in St Neots Charity Dragon Boat Race

Urban&Civic returned for a second year to compete in the infamous St Neots Dragon Boat Race, going head-to-head with 22 teams made up of local community groups, businesses and partners.

Finishing mid-table last year, Wintringham Wagtails were back on the River Ouse, looking to paddle their way up the scoreboard! Wintringham Wagtails – named after the development’s hero species – included a few rowers with experience from the previous year but for most it was their maiden voyage.

After conquering three qualifying heats and a nail-biting semi final, Wintringham Wagtails were through to the final. The last race was incredibly close, and Wintringham Wagtails took the silver, just missing out to overall champions the Young Guns.

Christine Littlewood said: “This annual charity event is a fantastic family day out and it was great to see many of our residents cheering us on as we competed in the Dragon Boat races. We had lots of fun while raising money for local and national charities, and were delighted to win a podium position.”

Urban&Civic was Gold Sponsors of this year’s event and Wintringham Wagtails will be back again next year – going for gold!



Wintringham on Wheels

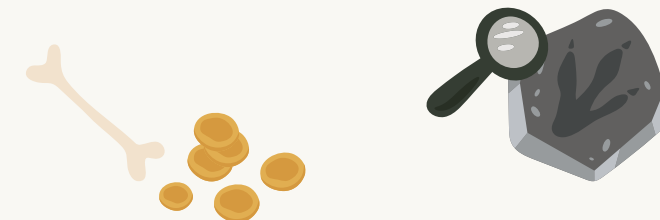
To help people living in Wintringham and the surrounding communities explore the development and wider area by bike Urban&Civic, masterdeveloper for Wintringham, held a free, bicycle-themed fun day on Wintringham School Plaza in September.

The event provided a host of cycling activities including pedal-powered smoothie machines and the chance to try out a range of bikes and e-bikes on the newly opened leisure trail around the first phase of the development.

Christine Littlewood said: “This is the second year we have run this event and residents braved one of the hottest days of the year to have lots of fun trying out the different bikes, especially the cargo and recumbent/tandem combo bikes, and making smoothies using pedal power!

“Cycling is a fun and healthy way to get about and be more active and we hope it has inspired some more of our residents to get on their bikes to explore Wintringham, St Neots and beyond.”

The event is the latest in a programme of initiatives being implemented by the Community team at Wintringham, working with the development’s active travel partners – Go Travel through its LocalGo scheme – to help get people out of their cars and onto their bikes (see page 17 for more information).



Wintringham Heritage Day

Over 150 residents, neighbours and members of the surrounding community delved into St Neots fascinating past at Wintringham’s Heritage Day in October.

Families and friends visited Wintringham Primary Academy to hear from archaeologists, discover some of the hidden gems on display at St Neots Museum, and find out what life would have been like for our ancient ancestors living in the area during the Iron Age.

Urban&Civic’s Communities team worked with partners Oxford Archaeology and St Neots Museum to produce a wealth of information and artefacts from excavations at Wintringham and the local area, dating back as early as the Middle Bronze Age – over 3,500 years ago. Visitors were able to see how archaeological investigations are helping piece together the jigsaw of St Neots’ past.

So far, the remains of around 60 roundhouses – used as homes – have been found at Wintringham. They survived in the ground as circular ditches or gullies, which outline the shape of the outer walls. Visitors were treated to a glimpse of what life would have been like in the Iron Age, with models of Wintringham’s roundhouses on display as well as an interactive Iron Age experience from a re-enactor who brought along a range of activities for the whole family to enjoy.

As well as presentations on the latest finds at Wintringham, which include a possible shrine complex at the heart of a large Roman settlement, Oxford Archaeology brought a range of Roman artefacts from the latest dig. This included rotary querns used for grinding grain into flour, painted wall plaster, animal bones from a Roman enclosure ditch and pottery fragments found in an Early Roman kiln.

Stuart Ladd, Project Officer for Oxford Archaeology, said: “The exhibition was a great opportunity to summarise the story so far and present the most recent results from the last four years of archaeological excavations at Wintringham. We revealed the latest information on the possible Roman shrine building that we uncovered earlier this year – which was almost as large as the school sports hall! There is much more work still to be done analysing the artefacts, but we were pleased that visitors were so engaged and keen to hear the results when the material is fully analysed.”

St Neots Museum helped set the context within the wider area and brought its Kimbolton coin hoard collection and Treasure for the Gods/Iron Age Huntingdon exhibition to help understand some of the social dynamics of the time – from the economy to religion.

As well as presentations and artefacts, there was plenty to keep the children informed and entertained, with a highlight being Oxford Archaeology’s dig pit, where budding archaeologists could try their hand at excavation to see what they could uncover.

The team is already making plans for next year’s heritage event. In the meantime, you can find out more about Wintringham’s fascinating past at www.wintringham.org/archaeology/



Supporting health and wellbeing at Wintringham

Urban&Civic, Wintringham’s master developer, is committed to listening to and working with residents to ensure the best possible development for everyone living here. As part of a long-term commitment to support positive health and wellbeing among residents, Urban&Civic is working with the Quality of Life Foundation to take regular surveys to assess the quality of life of residents who take part, and to help evolve the design and layout of Wintringham, and the amenities and activities coming forward, in response to feedback received.

The Quality of Life Foundation is a not-for-profit organisation set up to raise people’s quality of life by making wellbeing central to the way we create and care for our homes and communities. Its mission is to create change in the way the housing industry acquires, plans, builds and manages new homes and communities to improve people’s quality of life.

The team from the Quality of Life Foundation were around over the Summer, speaking to residents and encouraging them to complete the online survey about what it’s like to live in Wintringham.

The survey ran from 31 July to 9 October 2023. For every survey completed, Urban&Civic made a donation to three local charities – St Neots Foodbank, National Childbirth Trust (NCT) and the Waterfowl Sanctuary.

The survey focused on different aspects of living in Wintringham and tried to understand the impact of these aspects on local residents’ perception, wellbeing and engagement with the local area and their home.

The themes covered in the survey were:

- **Control:** how much control and influence you feel like you have over your local area.
- **Health:** how your home and local area affect your health and wellbeing.
- **Nature:** your relationship with local wildlife and green spaces.
- **Wonder:** how you relax and enjoy yourself in your free time in your local area.
- **Movement:** how you get around your local area.
- **Community:** the sense of community in your area.

The Quality of Life Foundation will analyse the results and report back on key findings early next year, with recommendations for how to continue to support a good quality of life at Wintringham. The Urban&Civic project team will then work with the Residents’ Association and wider community to embed the responses in an action plan, and keep evolving this with future surveys, with the next one scheduled for 2025.



Supporting sustainable travel

By travelling more sustainably, both for social journeys and commuting, the local air quality will be improved and traffic reduced, providing benefits for the whole community.

Urban&Civic is working with sustainable travel partner Go Travel Solutions on the LocalGo scheme, which is a great way to support sustainable options and help residents embrace a culture of ‘car last, not car first’.

The LocalGo initiative – which now has over 80 members at Wintringham – promotes the low carbon travel options available locally and helps residents access discounts and offers to help them leave the car at home by walking, cycling and using public transport connections.

Membership to LocalGo is free for Wintringham residents and provides personal travel planning support as well as a £50 cycle voucher that can be used on anything cycle-related product including new bikes, servicing, clothing and accessories, a £50 bus voucher and two free journeys on the Ting bus service (a flexible demand responsive transport service serving St Neots).

Christine Littlewood said: “The promotion of sustainable transport is a vital part of creating a sustainable and healthy community here at Wintringham. We’re close to St Neots, have a mainline station a short cycle ride away and are part of the popular demand responsive bus service Ting, providing real opportunities for our residents to choose cycling, walking or public transport over their cars.”

To join, visit: www.localgo.co.uk/join and enter the verification code wintringham@localgo.co.uk on the sign-up form. You will receive an email to validate your account, then you can log in and start saving!

If you have any queries, please email: wintringham@localgo.co.uk

The LocalGo scheme is a great way to support sustainable options and help residents embrace a culture of ‘car last, not car first’.



50th LocalGo member

Earlier this year, Christine Littlewood Community Development Lead for Wintringham and John Keenan from Go Travel Solutions presented LocalGo’s 50th member, Nikki, with £50 of vouchers for Roberto’s Deli in St Neots to mark this milestone for the initiative. Nikki moved to Wintringham with her partner last September, and joined LocalGo following a Residents’ Association meeting where the benefits of the scheme were promoted.

Nikki said: “We travel by train a lot and proximity to the rail station was one of the reasons we moved to Wintringham, so we are looking forward to using the rail card discounts. We’re also hoping to use the voucher for the Ting bus service soon.”



Supporting active communities

The principle of designing healthy living into new places has been a goal of both public policy and best practice masterplanning for a long time: with the focus sharper than ever in the wake of the pandemic, and major public health challenges of both obesity and mental health.

Following a successful pilot at Alconbury Weald, master developer Urban&Civic and independent charity Living Sport are bringing *Active New Communities* to Wintringham.

The project explores how events, activities and support can open up opportunities for people within a new community to:

- Connect to existing sports groups, events and activities in the area they move to.
- Establish healthy routines in their daily lives to increase their physical and mental health and wellbeing.
- Help identify gaps and shape the future delivery of sports and activities within the new development, for the new and existing communities.

Rebecca Britton from Urban&Civic, said: “When people move into a new home, their whole routine changes, and they may have moved away from the clubs and interests they once had. This provides a threat and opportunity for their health: people might get out of the habit of playing sport or exercising in their relocation, or if they find opportunities early to get involved with things, it can create a framework for leading a healthy active life – not just playing sport, or going for a run, but also meeting people and making friends within their new community.

“Living Sport will be driving those activities and connections whilst ensuring people find their own ways to lead active lives.”



Wintringham Resident Survey (for sport and physical activity)



Living Sport is part of a unique network of organisations supported by Sport England, which allows it to be the local delivery partner for their national strategy, “Uniting the Movement”; bringing a wealth of knowledge from across England.

The Living Sport team focuses its work on championing inclusivity, addressing inequalities and removing barriers to support local communities. They can also support local residents to access grants from sporting bodies for training and facilities.

Jenny Lambert, Programme Delivery Officer at Living Sport, said: “Living Sport is delighted to be working with Urban&Civic over the next three years to support the community sport development planning and implementation at Wintringham. Our aim is to empower the community to provide sustainable and resident-led sport and physical activity opportunities.”

Jenny will become a familiar face around Wintringham, so please do stop her to say hello and share your thoughts and ideas for how she can help support our active, healthy community.

You can also get in touch by emailing Jenny.Lambert@livingsport.co.uk or calling 07563 023422.

To ensure a bespoke approach for Wintringham, the Living Sport team would like to find out a bit about you and hear your thoughts. Please complete the survey using the QR code above. It should only take 5-10 minutes and your input would be much appreciated.



Our vision is of lives and communities improved by people being more active.

Below: Active New Communities pilot at Alconbury Weald



Feedback from Key Phase 2 Community Consultation

Earlier this year we invited the community to help shape the plans coming forward for Phase 2 of Wintringham, which covers the area between Wintringham Brook to the north and Hen Brook to the south. We wanted to make sure the voice of the growing Wintringham community helps shape the plans coming forward as we create this new part of St Neots.

Residents were asked to complete an online survey and share their thoughts on five key themes: the big picture; new homes; local facilities; green spaces, sport and play; and connections. Over the next few pages we set out, the key points from the questions asked; summaries of the responses given; and the design response from the team working on the plans for Phase 2.

The project team is now refining the plans and preparing to submit them in Spring 2024.

THE BIG PICTURE

Phase 1 will deliver 1,600 homes, the first primary school (Wintringham Primary Academy), the District Centre with shops, community space, health centre, nursery, gym and café/restaurant as well as green spaces including two parks and a network of walkways and cycle paths. Phase 2 will include the next 800 homes, a new primary school, local facilities, parks, play areas and sports facilities.

WHAT YOU SAID

The things most respondents like about Wintringham so far are the quality and frequency of green spaces, pedestrian and cycle routes, ecological benefits and play spaces. In Phase 2, respondents want to see more green space and ecological enhancements/a focus on wildlife, sustainable features (such as solar panels and heat pumps), more play areas, sports pitches, waterside areas, a continuation of pedestrian and cycle routes and good links to St Neots.

DESIGN RESPONSE

The approach to nature-led green spaces continues, and the opening of Wintringham Waters in Summer 2024 marks the gateway between the two phases, as well as providing a new connection to the town. While the District Centre coming forward in Phase 1 will bring forward additional amenities (such as café, shops and healthcare), Phase 2 will provide sports pitches, alongside growing the leisure routes for walking and cycling.



Future development

NEW HOMES

Phase 2 will see up to 800 new homes, which as part of our commitment to a high quality, low carbon development will follow Urban&Civic's new Sustainability Framework. This will ensure housebuilders build energy and water efficient homes, with lower carbon materials. A range of house types and tenures are anticipated to meet local need, including apartments, family homes and supported homes for older people as well as single storey and adaptable homes with affordable options including shared ownership, rent to buy and social rent as well as private rental options.

WHAT YOU SAID

The majority of the respondents think Wintringham has the right mix of sizes, house types and tenures, with some suggesting there should be supported living for older people and bungalows as well as

more four and five bedroom homes. In Phase 2, people would like to see more homes with driveway parking and garages, near open space and public transport links.

DESIGN RESPONSE

Part of the final part of Phase 1 (south of the District Centre) will include a range of homes for older people, including supported living, bungalows and care provision, and elements of this may be carried over into Phase 2. The Design Code for this phase will be broadly consistent with the first phase, with some review of parking layouts and a desire to push housebuilders further with their sustainability commitments and provision of renewable energy, EV charging and bike storage.



Future development



LOCAL FACILITIES

St Neots is the main town centre for residents in Wintringham but Phases 1 and 2 will bring forward a cluster of amenities in the District Centre (Phase 1), and potentially facilities co-located with the second primary school in Phase 2, to support the daily needs of local people.

WHAT YOU SAID

Cafés and greengrocers were the most popular facilities respondents would like to see in Wintringham. Other popular suggestions include play along the way routes to school, community allotments, co-working space, healthcare (GP surgery, dentist and pharmacy), pub/restaurant, bakery, supermarket, hair salon, butchers and dog groomers. There was support for community allotments as well as individual plots in accessible locations with sheds, water supply, cycle parking and an area for composting.

DESIGN RESPONSE

Many of the above facilities will be coming forward within the District Centre of Phase 1 opposite the Primary School – which is the main cluster for shops and services within the development. This space includes healthcare, café and shopping facilities, and the views expressed will help us target the market for some of these additional services to come forward in the retail units and office spaces planned. Growing space and play spaces will be designed in to the new spaces and draw on the feedback shared.

Future development

GREEN SPACES, SPORT AND PLAY

Phase 2 will bring forward 54 acres of public green space including parks, play areas and sports pitches. The proposed green infrastructure is a mosaic of green spaces with varying character and purpose. A north-south linear park will provide pedestrian and cycle routes running alongside waterways. The Central Green space is an area for play and recreation where the community can come together. Community gardens are located within the east-west green links, providing meeting and recreation spaces for people to enjoy. Formal sports pitches will be located along the western edge, adjacent to the school, with play spaces distributed throughout the key phase, easily accessible by all residents.

WHAT YOU SAID

Features for nature that most respondents would like to see in the green spaces in Wintringham include wildflowers, fruit trees, bird boxes, hedgehog highways, protected wildlife areas, bug hotels, insect habitat piles, rapture perches and bat boxes. The majority of



respondents would like to use cycling, tennis, fitness trails and football to stay active at Wintringham. Other suggestions include bootcamp, netball, running/jogging paths, yoga/pilates and swimming. Play equipment that residents would like to see in parks includes slides, balance beams, sandpits, swings and roundabouts, with dedicated space for toddlers.

DESIGN RESPONSE

The features for nature can all be incorporated within the biodiversity features planned for Phase 2, along with the leisure routes for walking and cycling. The feedback on sports, alongside the Living Sport project working with residents, will help inform the detailed design of sports pitches and ongoing discussions with Sport England and local authorities about sports provision needed locally.

Future development



CONNECTIONS

Walking and cycle routes are woven into each area coming forward to connect homes to green spaces and amenities such as the next new primary school. As well as having routes on the roads, the walking and cycling routes through the green corridors promote quicker and more pleasant ways to get around on foot or bike, scooter or buggy. Wintringham as a whole is also designed with a perimeter route with set distance loops within it. These will connect across all phases and also enable connection to the wider Rights of Way network outside the development.

WHAT YOU SAID

Respondents thought that direct cycle links to St Neots segregated from the highway, on safe, well-lit routes with bike parking alongside regular, reliable and direct bus services would encourage them to leave the car at home and use an Active Travel Route. Other transport enhancements suggested to help people move around Wintringham and the wider area more sustainably included: bus service or minibus into St Neots and Cambridge; more pedestrian/cycle links to town centre

(across the train lines), train station and Love's Farm; bike/electric bike and scooter hire; free electric mopeds; electric vehicle charging points, wider paths/cycle lanes and clear signposting. Space to land an emergency helicopter was also suggested.

DESIGN RESPONSE

Next year will see improvements to the Right of Way under the railway line (at the bottom of Phase 1), which enables an additional connection to St Neots, and the team will look at additional signage and maps to help people find easier routes. While retrospective work off site within the town is harder and not part of current plans, the team is exploring this with the County Council transport team to see how this can improve alongside the roll-out of the development. Work with our active travel partners GO Travel will continue to explore how the District Centre in Phase 1, and space around the second primary school in Phase 2, can support mobility hubs with bike and scooter hire. Further promotion and use of the Ting Demand Responsive bus will be explored to see how this can support a better shuttle service to the town.

Wintringham hosts work experience week

The team at Wintringham welcomed three Year 10 pupils from Ernulf secondary school in St Neots for a week of work experience. As well as classroom-based activities, the students learnt practical skills and found out more about the wide range of careers needed to create a sustainable new development like Wintringham.

The students, who will be taking their GCSEs next year, visited the development to see how the subjects they are studying can be applied in real life scenarios. They also found out about the skills needed and career opportunities available with master developer Urban&Civic and some of its consultant team, including planning consultants David Lock Associates, civil engineers ECL and Oxford Archaeology.

Sessions included interactive activities on a variety of different topics including master planning using the CHLOE software, project management and placemaking as well as archaeology, which is an important part of the site preparation process. Creating homes in nature is also an important feature of all Urban&Civic's developments, and Landscape Design and Delivery Manager, Scott Chalmers spent time explaining the landscaping strategy and what goes into the design and planning of these key areas to enhance biodiversity.



The students spent time with the Barratt and David Wilson Homes' site team and tried their hand at bricklaying before taking a tour of the Eco Discovery House to help understand the housebuilder's sustainable objectives. ECL also gave them a behind the scenes tour and an insight into the work they have been doing to get the roads and cyclepaths, drainage systems and other engineering infrastructure in place throughout the first phase of development.

Christine Littlewood said: "It's been great working with Ernulf school to develop a programme that gives students insight into the wide variety of different career opportunities available within our industry, and right on their doorstep! The students were engaged and enthusiastic and we wish them every success in their studies and future careers, which we hope might bring them back to Wintringham."

Local youths help shape Wintringham's parks and play spaces

The Urban&Civic team held a youth consultation to encourage local 11 to 14-year-olds to share their thoughts and ideas on future community spaces within the development. Working alongside residents, local youth groups and youth workers, Christine Littlewood welcomed 30 young people to St Neots Town Football Club to host a day of presentations and workshops to co-design ideas around youth spaces, play areas and the new Community Centre.

Following Christine's scene setting, Laura Bradley from Wintringham's landscape design experts Bradley Murphy Design, introduced the session by sharing inspiring images of different parks and play spaces around the world, then tasked the group to develop their perfect youth space. The youngsters used a variety of methods - from simple paper-based and drawing activities through to 3D models - to design outside spaces they would like to see. The groups then adapted their ideas to inside space, to explore space for young people within Wintringham's planned Community Centre, which will come forward at the heart of the District Centre in the next few years.

Feedback from each group was shared, with some key focus for outside space including:

- the importance of safe, well lit, welcoming green spaces for young people to 'hang out'.
- looking at innovative and inclusive seating in a landscaped garden setting.
- camping areas.
- accessibility to a 'charging station' for calls and playing music.



For the Community Centre, key points included:

- sustainable energy, such as solar panels.
- youth areas for their own games and activities as well as somewhere quiet and safe to meet friends or have some time to themselves.
- the need for drinks and snacks to be available, including space to make their own smoothies and pizzas.

The group also took part in some fun outdoor activity sessions with Wintringham's partners Fitness Rush - who provide a mobile pop-up gym and bespoke advice on healthy living to residents - and played football on the full size astro pitch.

Christine Littlewood said: "It was great to see such a diverse group of young people come together to give us their views and feedback. Young people don't often get a voice in the design of spaces which are really important to them - places they spend time, meet their friends and hang out. Not only did the groups produce some great ideas, but they were also thoughtful about the needs of others and creating inclusive spaces for all."



Key Contacts

Hopefully you have had a chance to look through the *Welcome Pack* you received, and this should have a wealth of information about local facilities and amenities. Below is a handy summary of the key contacts you might find useful:

General maintenance

Including: grass cutting; clearing drains; gritting roads in Winter; repairing street lighting; trimming hedges; and ensuring play area safety.

Managed by Encore Estate Management
01223 866980
info@encoreestates.co.uk

Housebuilders

Please contact your house builder with any queries about the new homes you have moved into, including outside lighting, electricity, water and network connections.

Housing associations

If you have any queries about your home, please contact your housing association representative.

Wintringham community development and events

Including: community events; activities, facilities and new resident information.

Christine Littlewood,
Community Development Lead
Christine.littlewood@urbanandcivic.com
07384 816725

Employment and training

Support with recruitment, employment and training opportunities in the local area.

Health

Lakeside St Neots provides GP services for 24,000 patients in and around St Neots. Please contact Reception to register as a new patient. If you have moved locally and are already registered at the practice, please remember to update your new address. If you are looking to register we urge all residents to do so in good time, as it can take some time to update and transfer medical records, and it is better to have this sorted out before you need to see a doctor.

T 01480 406677
lakeside.stneots@nhs.net

Please also refer to your *Resident Welcome Pack* for further information and contact details on local hospitals, dentists and healthcare providers, and a range of other facilities and services.



Urban&Civic, our housebuilder partners, contractors and The Wintringham Residents' Association are pleased to be supporting St Neots Food Bank this Christmas.

If you would like to donate to St Neots Foodbank, find out more at stneots.foodbank.org.uk

WINTRINGHAM
ST NEOTS